

NEW PRODUCT RELEASE

Split Air Conditioner Wall-mounted

Model:
ASEG18KMTE / AOEG18KMTA
ASEG24KMTE / AOEG24KMTA



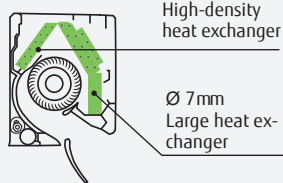
High energy saving

High-efficiency has been achieved by the lambda-shaped heat exchanger, large cross-flow fan, and the new refrigerant.



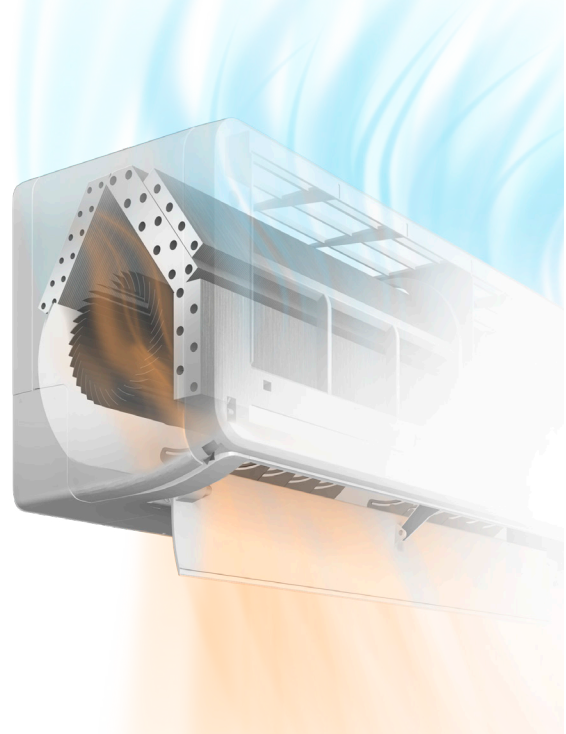
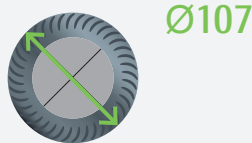
Hybrid-heat exchanger

The large hybrid heat exchanger has greatly improved the heat exchange efficiency to achieve top-level SEER and SCOP.



Ø107 Large cross-flow fan

The large-diameter fan generates air volume efficiently even at reduced power.



Smart device control (Option)

With the optional WLAN adapter installed in the air conditioner, you can control it from anywhere with your smart device.

* For more information about smart device control, please contact your sales rep.



AIRSTAGE Mobile

You need to install the AIRSTAGE Mobile app on your smart device in order to control the air conditioner.

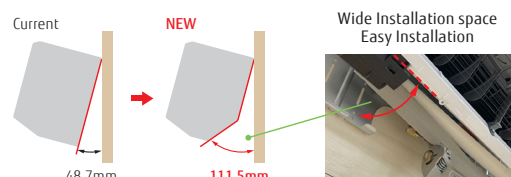


WLAN adapter (USB)



Easy access to the flare pipe connection

Installation when left outlet piping is easier by removable under cover of the indoor unit chassis. Installation when center outlet piping is easier by design change of wall hook bracket.





Specifications

Model name	Indoor unit		ASEG18KMTE		ASEG24KMTE	
	Outdoor unit		AOEG18KMTA		AOEG24KMTA	
Power Source	Single phase, ~230 V, 50 Hz					
Capacity	Cooling	kW	5.2		7.1	
	Heating		6.3		8.0	
UK Total Cooling / UK Sensible Cooling						
Input Power	Cooling/Heating	kW	1.39 / 1.56		2.08 / 1.91	
EER	Cooling	W/W	3.74		3.41	
	Heating		4.04		4.19	
Pdesign	Cooling/Heating (-10°C)	kW	5.2 / 4.8		7.1 / 7.1	
SEER	Cooling	W/W	7.77		7.30	
	Heating (Average)		4.60		4.20	
Energy Efficiency Class	Cooling	A++		A++		
	Heating (Average)	A++		A+		
Annual Energy Consumption	Cooling	kWh/a	234		340	
	Heating		1,460		2,362	
Moisture Removal			1.7		2.7	
Sound Pressure Level	Indoor (Cooling)	H/M/L/Q	45 / 40 / 35 / 29		49 / 40 / 35 / 29	
	Indoor (Heating)	H/M/L/Q	46 / 40 / 35 / 29		49 / 40 / 35 / 29	
Sound Power Level	Outdoor (Cooling/Heating)	High	50 / 50		54 / 52	
	Indoor (Cooling/Heating)	High	60 / 61		65 / 65	
Airflow Rate	Indoor/Outdoor (Cooling)	High	980 / 2,350		1,170 / 3,240	
	Indoor/Outdoor (Heating)	High	1,020 / 2,100		1,170 / 2,820	
Net Dimensions H x W x D	Indoor		mm	280 × 980 × 240		280 × 980 × 240
	Outdoor		kg	12.5		12.5
Weight	Outdoor		mm	632 × 799 × 290		716 × 820 × 315
	Outdoor		kg	36		42
Remote Controller Type (Supplied With Unit)	Wireless					
Interconnecting Cable (Suggested cable size 1.5mm)	3 Core + Earth					
Suggested MCB Size	A		16		16	
Max. Operating Current	Cooling/Heating	A	9.5 / 13.5		13.5 / 16.0	
Power Supply To	Outdoor					
Connection Pipe Diameter (Liquid/Gas)			Inch		1/4 & 1/2	
Max. Pipe Length (Pre-Charge)			m		25 (15)	
Max. Height Difference			m		20	
Refrigerant	Type (Global Warming Potential)		R32 (675)			
	Charge (CO2eq-T)	g	1020 (0.689)		1320 (0.891)	
Operating Range	Additional Charge		g/m		20	
	Cooling	°CDB	-10 to 46			
Heating	-15 to 24					

Optional parts

* For optional parts compatibility of Intesis devices, please contact your sales rep

Wired Remote Controller (Design type):	UTY-RVRY	External switch controller:	UTY-TERX	Network Converter for single split (DC power supply type):	UTY-VTGX
Compact wired remote controller:	UTY-RCRYZ1	Communication kit:	UTY-TWRXZ2*2	Network Converter for single split (AC power supply type):	UTY-VTGXV
Wired remote controller (touch panel):	UTY-RNRYZ5	External connect kit:	UTY-XWZX	Silver Ion filter:	UTR-FA16-5
Simple remote controller (without operation mode):	UTY-RHRY	WLAN adapter:	UTY-XWZXZ5*1	External input and output PCB*1:	UTY-XCSXZ2
Simple remote controller:	UTY-RSRY		UTY-TFSXH3		
			FG-AC-WIF1Z1		

*1 It is required when 2 or more external input or output ports are used.
*2 It is required when a hard wired controller is connected.

Dimensions

(Unit: mm)

