

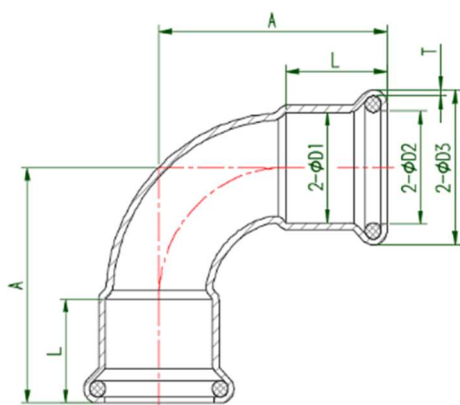
**Product Code:** PFWE-15, PFWE-22, PFWE-28, PFWE-35

**Product Description:** Press Fit M Profile 90 Degree Elbows

### Product Specification:

**Material:** Copper

**Size:** 15mm, 22mm, 28mm, 35mm



Code	L	A	D1
PFWE-15	20	38	15.2
PFWE-22	21	47.5	22.2
PFWE-28	23	56.5	28.2
PFWE-35	26	68	35.2

### Features and Benefits

Simple and efficient flame free jointing system which is both time and labour saving. It creates a lifelong, leak proof joint when used appropriately with certified copper tube and offers a safer solution than either silver solder or compression fittings.

### Marking on Body

'MB' - MidBrass

### Technical Data

Field of Application	Water – Potable and Central Heating Systems
Max. Working Pressure	16 Bar
Max. Working Temperature	-24°C to +110°C
Other Standards/Approvals	BSI Kitemark and WRAS Approval