

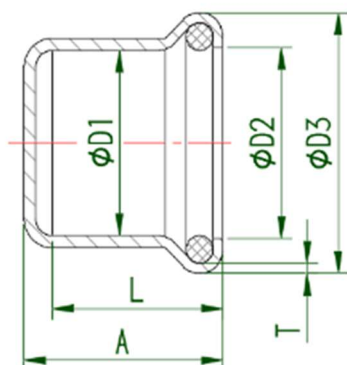
Product Code: **PFWEC-15, PFWEC-22, PFWEC-28, PFWEC-35, PFWEC-42, PFWEC-54**

Product Description: **Press Fit M Profile Stop End**

Product Specification:

Material: Copper

Sizes: 15, 22, 28, 35, 42 and 54mm.



Code	D1	A	L
PFWEC-15	15.2	22.5	20
PFWEC-22	15.2	24.5	21
PFWEC-28	28.2	26.5	23
PFWEC-35	35.3	29.5	26
PFWEC-42	42.3	33.5	30
PFWEC-54	54.3	38.5	35

Features and Benefits

Simple and efficient flame free jointing system which is both time and labour saving. It creates a lifelong, leak proof joint when used appropriately with certified copper tube and offers a safer solution than either silver solder or compression fittings.

Marking on Body

'MB' - MidBrass

Technical Data

Field of Application	Water – Potable and Central Heating Systems
Max. Working Pressure	16 Bar
Max. Working Temperature	-24°C to +110°C
Other Standards/Approvals	BSI Kitemark and WRAS Approval