



CONTENTS

Fill Valves	10	Wastes	56
Flush Valves	20	Waste Fittings	66
Concealed Cisterns	28	Flexible Hoses	68
WC Pan Connectors	38	Toilet Accessories	72
Traps	46	Washers & Spares	76



HIGH QUALITY PLUMBING PRODUCTS FOR ANY INSTALLER

ABOUT US

Viva are one of the market leaders for toilet spares, connectors and wastes. The company formed in 2008, driven by two plumbers with a desire to solve everyday problems in the sanitary fittings market, with one common goal in mind "Making the installers life easier." We have used the economic uncertainty to our advantage, bringing new ways of thinking, to a very traditional market. However none of this would be possible without our customers, and we strive to make sure all our clients feel part of the Viva team and look to help them wherever possible.



#OUTWITHTHEOLDINWITHTHEBLUE

OUR PRODUCTS

We have several core product ranges, each category manufactured in accordance with international standards. Our Skylo Range of cistern fittings have been tested and are WRAS approved. We ensure quality runs throughout the whole business and in everything we do. We monitor all our quality and environmental processes in accordance with ISO-9001 and ISO-14001, which is externally audited annually always striving for continuous improvement.

OUR INNOVATION

Driven by our goal, our R&D team focuses on improving existing products, taking concepts available on the market today and improving their functionality and design to give the end user greater flexibility and choice. Examples of our commitment to innovation include the patented Skylo DUAL ENTRY Fill Valve Skylo UNI-BUTTON, Skylo Height Adjustable Syphon and our unique Smart-Flo design for our SLINKY-FIT WC Connectors.

OUR COMMITMENT TO SERVICE

As well as investing in products and innovation, we are always looking to improve our service to customers. We invest heavily in inventory, to ensure products can be delivered to the right people when they are needed. Key to our business is always looking at new ways to serve our customers, including technologies, IT, people, delivery and customer care.





PRO INSTALLER CLUB

INSTALL | COLLECT | REDEEM

HOW IT WORKS

As a member of the Pro Installer Club you will be able to collect points in exchange for rewards. Inside of each toilet cistern part, you will find a sticker with a unique code which can be submitted in exchange for points. Simply login to your account and register your points, which you can redeem instantly. We have designed an awesome range of merchandise for you to choose from, from hats and hoodies, to mats and mugs.

EARN YOUR BADGE!

Once registered we will send out your black Pro Installer Club membership bumper sticker in the post. Once you reach 200 points, you will be upgraded to our bronze bumper sticker. When you reach 500 points, you will be upgraded to silver, and when you reach 1,000 points, you will have entered our legendary gold level. Not only will we send you a gold bumper sticker, you will also have access to our gold edition merchandise.

FIND A RETAILER

When you login, you can instantly find all of your local stores. Whenever you need a part simply search using the product code, and you will be presented with a list of every store in your area with that item in stock. Once signed up it's simply a matter of heading down to your local store and logging your unique codes to bag more swag!

For more information please visit: www.vivasanitary.co.uk/pro



VIVA MERCHANDISE

HOW IT WORKS

As a member of the Pro Installer Club you will be able to collect points in exchange for rewards. Inside of each toilet cistern part, you will find a sticker with a unique code which can be submitted in exchange for points. Simply login to your account and register your points, which you can redeem instantly. We have designed an awesome range of merchandise for you to choose from, from hats and hoodies, to mats and mugs.





FILL VALVES

SKYLO FILL VALVES

A fill valve is what fills a toilet cistern to the correct level. It also replaces an old fashioned ball valve making your cistern more efficient. The Skylo range is the most complete offering of float valves on the market today. The range includes our new Air Gap and flagship Dual Entry 4 in 1 fill valves which is the only valve in the world that allows installers the choice of bottom or side entry in one valve.



Scan for Video
Install Guide

Technical drawings available
on request or visit
www.vivasanitary.co.uk



- △ Compact design
- △ Adjustable water level
- △ Delayed water filling
- △ Easy diaphragm access for fast maintenance
- △ Suitable for low and high pressure

SKYLO AIR FILL VALVES

Easy Access Maintenance

A quick access to the diaphragm washer for an easy service.



Easy Clean Aerator

The water silencing aerator is easily removed for cleaning purposes.



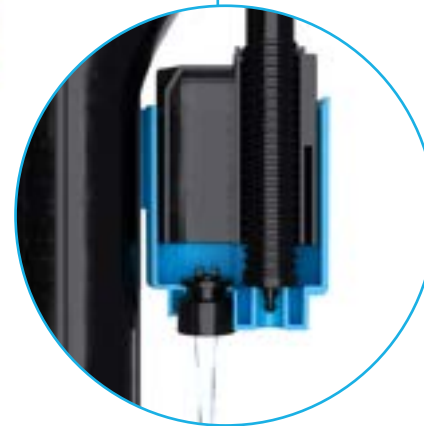
Telescopic

A telescopic function that not only gives full flexibility but also allows the fill valve to be completely removed from the cistern.



Delayed Fill

All Skylo fill valves have a water saving delayed fill which waits for all the water to be completely emptied from the tank before it starts to fill again.





ELIMINATING BLUE WATER

Blue water is the term used for a visual indication of back flow when the water from a toilet cistern returns to the pipework and can be visably seen when using blue bleach blocks inside a the cistern.

Our new Skylo Air Fill Valves guarantee to protect against backflow complying to BS1212-4 and are compatible with the requirements of AUK1.

2 STEP SILENCING



Step 1. Aerator

A built in and removable aerator which aerates and controls the water that flows out of the fill valve outlet. This gives a uniform constant filling volume before the water hits the silencing tube.

Step 2. Silencing Tube

The silencing tube acts as a half way point between the fill valve outlet and the bottom of the tank. Inside are upward facing notches at the point where the water hits the tube, reducing splashes giving the overall best surface and angle for a silent drain of water into the cistern.

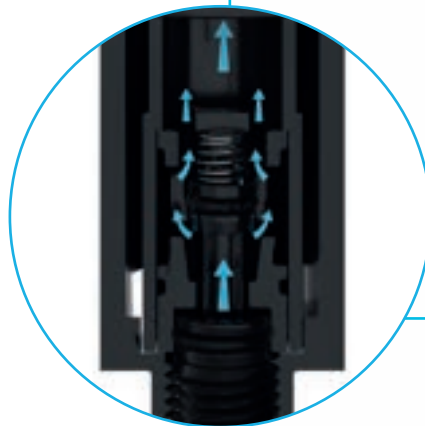
SKYLO DUAL ENTRY VALVE



DUAL ENTRY

Spring Loaded

Both side and bottom entry have a spring loaded opening meaning there is no requirement to blank off the unused opening.



Scan for Video
Install Guide



Bottom or Side Entry

The only valve in the world that allows installers the choice of bottom or side entry in one valve.

Double Check Valve

All Skylo Fill Valves come with an additional double check filter (Pat Pending) which can be used as an additional protection against backflow.





Skylo Dual Entry 4 in 1 Fill Valve

Product Code:
UNI/P
UNI/B (Brass Shank)

Features:
 Bottom & Side Entry
 ½" (UK) & ¾" (Euro)
 Easy to Install
 Telescopic
 180° Rotating Float
 Quiet Fill
 Water Saving Delayed Fill
 Double Check Valve



Skylo Bottom Entry Fill Valve

Product Code:
PP0020
PP0020/B (Brass Shank)
PP0020/A (¾" Euro)

Features:
 Easy to Install
 Telescopic
 Quiet Fill
 Water Saving Delayed Fill
 Double Check Valve



Skylo Side Entry Fill Valve

Product Code:
PP0012
PP0012/B (Brass Shank)
PP0012/A (¾" Euro)

Features:
 Easy to Install
 180° Rotating Float
 Quiet Fill
 Water Saving Delayed Fill
 Double Check Valve



Skylo Air Bottom Entry Fill Valve

Product Code:
SKYAIR01
SKYAIR03 (¾" Euro)

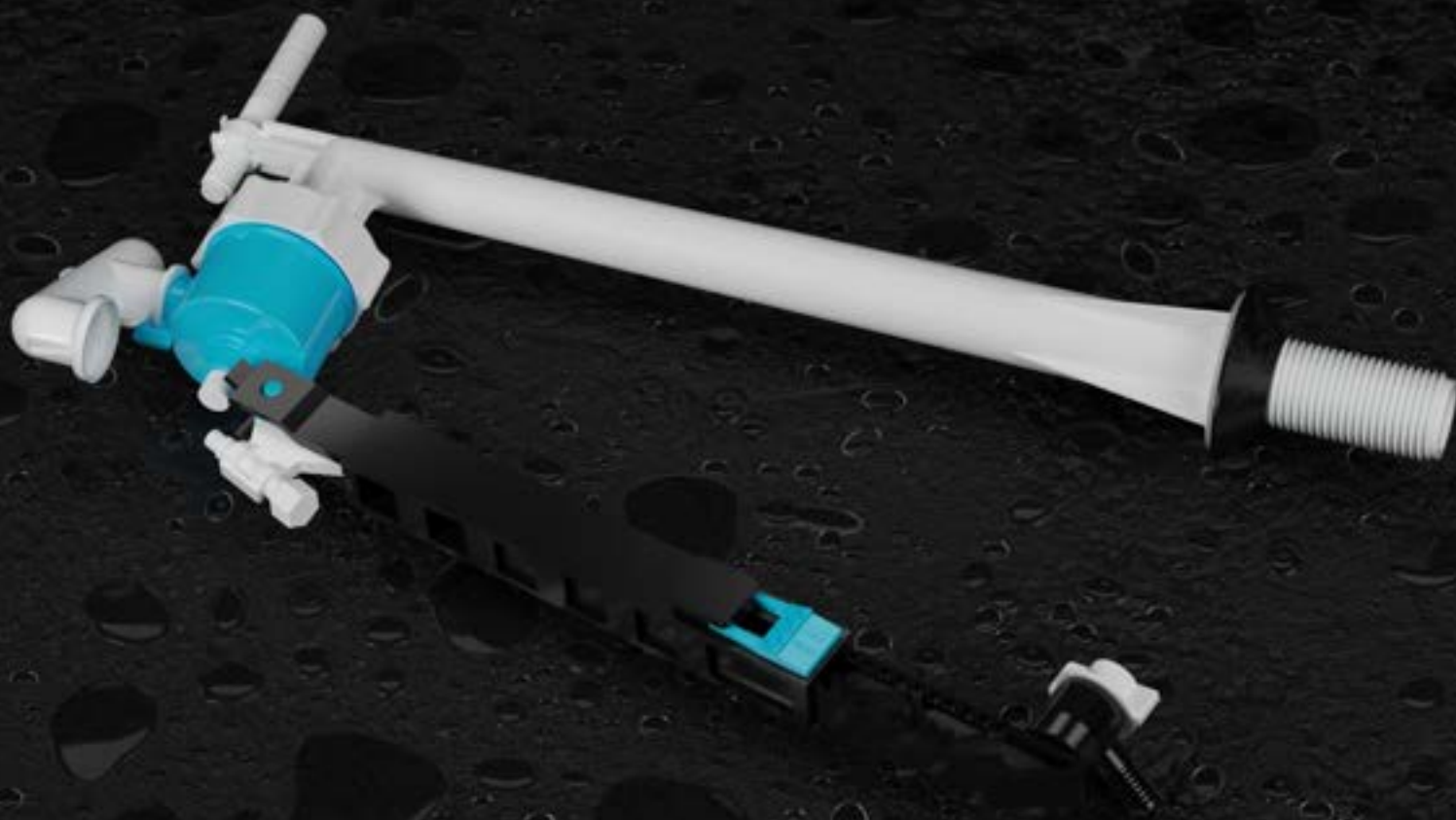
Features:
 AG Air Gap Design
 BS1212-4 Compliant
 Compact
 Telescopic
 Water Saving Delayed Fill
 Quiet Fill
 Heavy Duty Brass Shank



Skylo Air Side Entry Fill Valve

Product Code:
SKYAIR02
SKYAIR04 (¾" Euro)

Features:
 AG Air Gap Design
 BS1212-4 Compliant
 Compact
 180° Rotating Float
 Water Saving Delayed Fill
 Quiet Fill
 Heavy Duty Brass Shank



FILL VALVES

SKYLO BALL VALVES

The Skylo ball valve range, makes replacing the more traditional cistern ball valve easy and hassle free. Available in 3 types - straight bottom entry, offset bottom entry and side entry. They have a fully adjustable arm with a rotating float feature, ensuring they fit in even the tightest of cisterns. Diaphragm access is easy and the valves work on both high and low pressure systems.



Scan for Video
Install Guide

Technical drawings available
on request or visit
www.vivasanitary.co.uk



- Compact design
- Adjustable water level
- Easy diaphragm access for fast maintenance
- Suitable for low and high pressure

SKYLO BALL VALVES

Water Level Adjuster

The volume of water inside the cistern can be easily adjusted by turning the water level adjuster.



360° Pivoting Float Connector

Positioning the ball float is simple and easy with our full 360° pivoting connector.



Locking Clip

Skylo Ball Valves have a fully adjustable arm which is secured with a locking clip for a simple installation.



Scan for Video
Install Guide



Skylo Bottom Entry Ball Valve

Product Code:
SKY105

Features:
Easy to Install
Adjustable Arm
Pivoting Float



Skylo Side Entry Ball Valve

Product Code:
SKY115

Features:
Easy to Install
Adjustable Arm
Pivoting Float



FLUSH VALVES

SKYLO

DUAL FLUSH SYPHONS

The Skylo height adjustable syphon is a traditional toilet syphon that allows an installer to set a height at the desired level according to the size of the cistern, the syphon also has internal overflow, a dual flush function and multiple flushing volumes.

HEIGHT ADJUSTABLE

The height on our Skylo syphons can be easily adjusted from 7½" to 9½". Simply rotate the adjustment nut clockwise or anti clockwise to move the top piece of the syphon higher or lower which sets the height of the internal overflow. This means the syphon can cater for even more jobs and gives the installer greater flexibility.



Scan for Video
Install Guide

Technical drawings available
on request or visit
www.vivasanitary.co.uk



- Compact design
- Easy to install
- Height adjustable from 7½" – 9½"
- Internal overflow
- Water saving dual flush operation

SKYLO DUAL FLUSH SYPHONS

Internal Overflow

The overflow level is the point where the syphon bridges to the outlet tube.



Height Adjustment Screw

Skylo syphons are height adjustable from 7½" - 9½" and adjust by simply rotating the adjustment screw.



Volume Plugs

These plugs can be removed enabling a shorter full flush.



Locking Clip

A quick release clip which enables the syphon body to be removed from the outlet tube.



Scan for Video
Install Guide





Skylo Dual Flush Height Adjustable Syphon

Product Code:
AS01

Height:
7½" - 9½"

Features:
Compact
Height Adjustable
Dual Flush
Internal Overflow



Skylo 3 Part Dual Flush Height Adjustable Syphon

Product Code:
AS01/3P

Height:
7½" - 9½"

Features:
Compact
Demountable
Height Adjustable
Dual Flush
Internal Overflow



FLUSH VALVES

SKYLO

DUAL FLUSH VALVES

The Skylo range of flush valves, gives the end user endless possibilities. Our range has been designed with ease of installation in mind, taking into account all the different variations of cisterns.

ONE BUTTON THREE SIZES

Each flush valve uses a brand new concept, UNI-BUTTON, meaning the button supplied can cater for a wide range of cistern lid holes diameter. More and more often button sizes are varying, with the new UNI-BUTTON 40mm, 50mm & 60mm, hole sizes are no longer a problem and the job can be completed from the one kit, instead of purchasing expensive buttons.

EASY CLICK CRADLES

The range also comes with two easy click cradles (1½" & 2"), this means you can choose whatever size you need giving you a successful installation each and every time you use a Skylo.



- Compact design
- Internal Overflow
- Easy twist and remove for easy maintenance
- Water saving adjustable flush volume sliders
- Complete with universal button



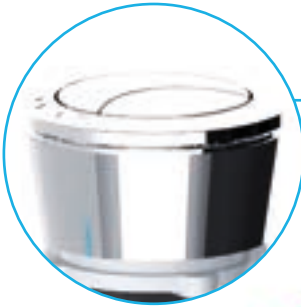
Scan for Video
Install Guide

Technical drawings available
on request or visit
www.vivasanitary.co.uk

SKYLO DUAL FLUSH VALVES

UNI-BUTTON

Our universal button fits lid hole sizes from 20mm - 60mm.



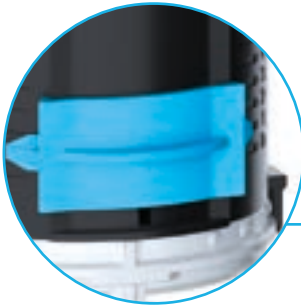
Adjustable Overflow

Equipped with an adjustable overflow that requires no cutting or trimming.



Full Flush Adjustment

Select how much water you want to remain inside the tank after each full flush with this slider.



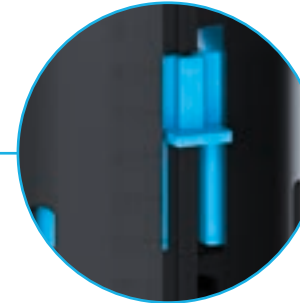
Dual Flush Lever

An easy touch dual flush lever can be used and operated by lifting up for half flush and down for a full flush.



Half Flush Adjustment

Select how much water you want to remain inside the tank after each half flush with this slider.



Easy Click Cradles

All Skylo Flush Valves are supplied with both 1½" & 2" cradles suitable for any installation including flush pipes.



Scan for Video
Install Guide



Skylo Dual Flush Valve

Product Code:
SKY005

Cable Length:
300mm



Skylo Dual Flush Valve

Product Code:
SKY015

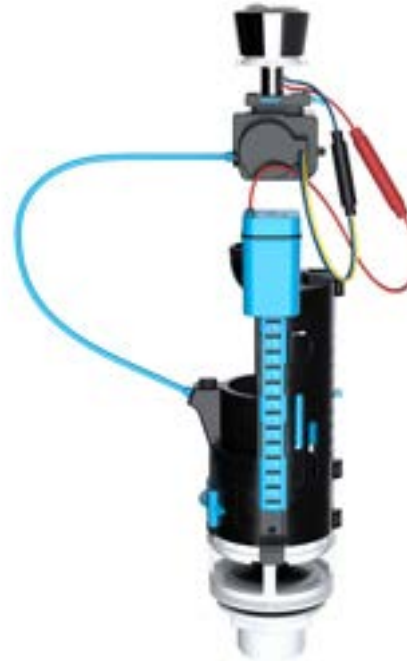
Cable Length:
570mm



Skylo Button and Handle Dual Flush Valve

Product Code:
SKY030

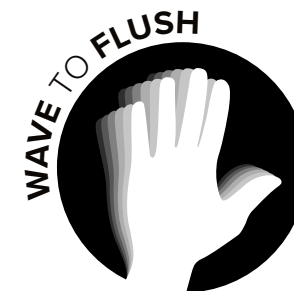
Cable Length:
300mm



Skylo AUTO Dual Flush Valve

Product Code:
SKY040

Cable Length:
300mm





CONCEALED CISTERNS

SKYLO

ULTRA WALL HUNG FRAME

Introducing the slimmest wall hung toilet frame on the market! This ultra-sleek design is perfect for creating a modern space-saving look in your bathroom. The height adjustable feet provide flexibility when installing, while the single solid steel construction ensures superior durability and strength.

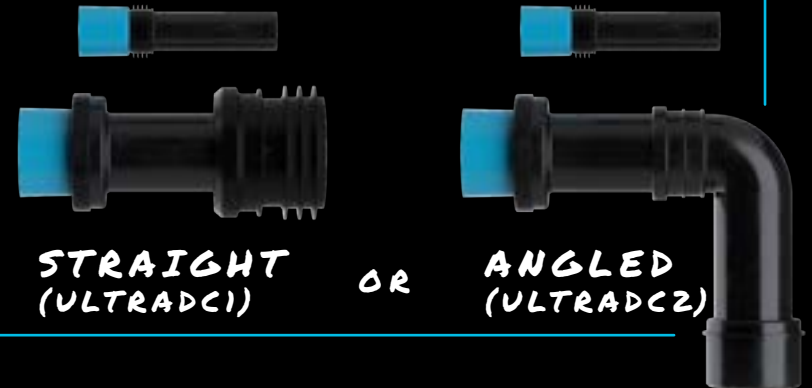
Cistern Dimensions: (H) 1140mm x (W) 400mm x (D) 75mmmm
Approx Cistern Weight: 14.5kg



Scan for Video
Install Guide

Technical drawings available
on request or visit
www.vivasanitary.co.uk

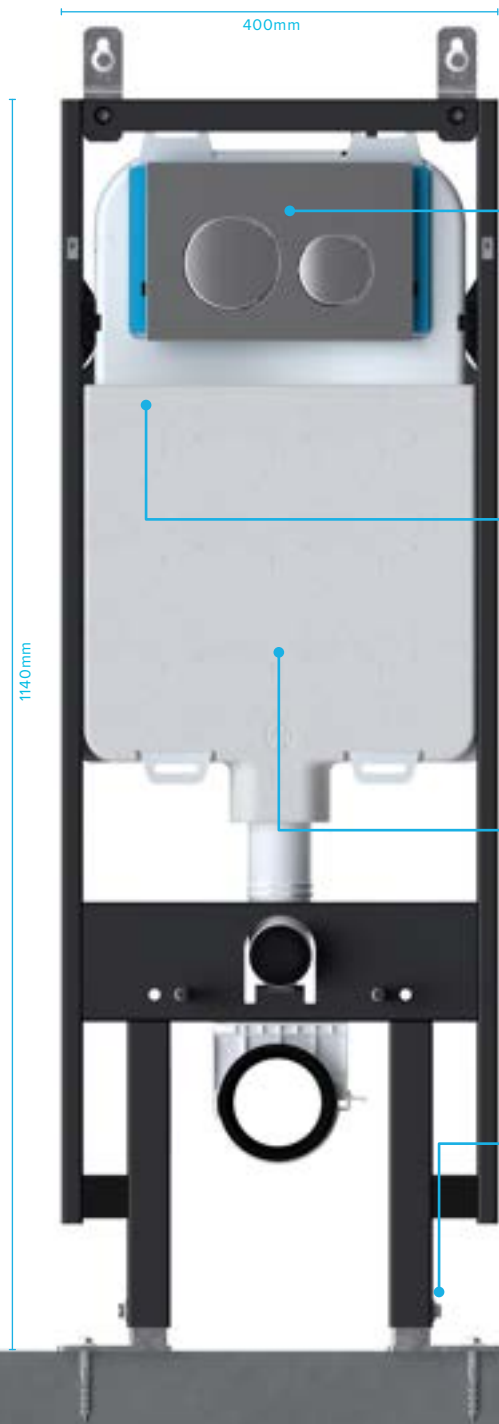
SUPLIED WITH **SKYLO**
ULTRA DRAIN CONNECTOR



- △ The slimmest wall hung frame on the market
- △ Supplied fully assembled
- △ Complete with snap in adjustable fixing bolts
- △ Supplied with a water saving delayed Air Gap Fill Valve
- △ Height Adjustable
- △ Flush pipe, drain connector and blanks all included



SKYLO ULTRA WALL HUNG FRAME



Easy Access Flush Button

All internal parts are easy accessible for a quick isolation or service.

Water Saving Fill Valve

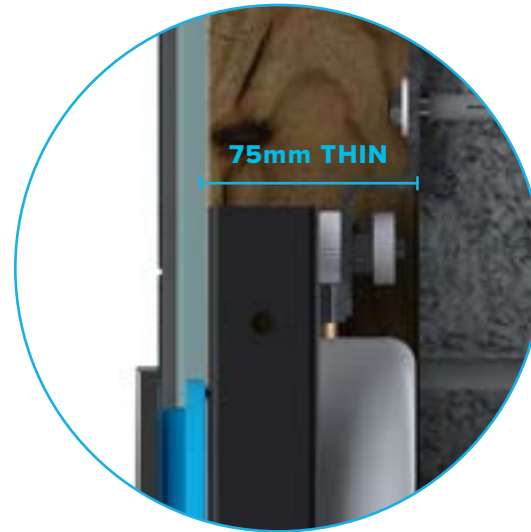
Supplied with a compact water saving Air gap fill valve giving you a delayed fill after every flush.

Dual Flush Valve

An Ultra compact dual flush valve which can be broken down for an easy removal or installation.

Height Adjustable

The steel feet can be adjusted to give you the correct height while also making sure the frame is level.



Skylo ULTRA Wall Hung Frame

Product Code:
SKYWHF01



SKYLO ULTRA DUAL FLUSH PLATES

All Ultra flush plates are supplied with the adjustable fixing rods and a bracket for securing the plate to the frame.

With two separate flush buttons, users can choose between a full or half flush.



A quick and easy lift and release function giving you full access to the inside of the cistern.



**Ultra10 Gloss Chrome
Dual Flush Plate**

Product Code:
ULTRA10



**Ultra12 Matt Black
Dual Flush Plate**

Product Code:
ULTRA12



**Ultra13 Gloss White
Dual Flush Plate**

Product Code:
ULTRA13



**Ultra+16 Metal Brushed
Copper Dual Flush Plate**

Product Code:
ULTRA16



**Ultra20 Gloss Chrome
Dual Flush Plate**

Product Code:
ULTRA20



**Ultra+26 Metal Brushed
Copper Dual Flush Plate**

Product Code:
ULTRA26



**Ultra+14 Metal Brushed
Brass Dual Flush Plate**

Product Code:
ULTRA14



**Ultra22 Matt Black
Dual Flush Plate**

Product Code:
ULTRA22



**Ultra+24 Metal Brushed
Brass Dual Flush Plate**

Product Code:
ULTRA24



**Ultra+15 Metal Brushed
Nickel Dual Flush Plate**

Product Code:
ULTRA15



**Ultra23 Gloss White
Dual Flush Plate**

Product Code:
ULTRA23



**Ultra+25 Metal Brushed
Nickel Dual Flush Plate**

Product Code:
ULTRA25



CONCEALED CISTERNS

SKYLO

COMPACT CONCEALED TOILET CISTERN

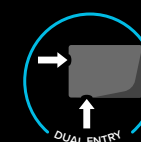
The Skylo concealed toilet cistern, is a slimline water tank manufactured from durable long lasting ABS plastic. The tank which can either be sited behind a wall or incorporated into furniture. Also the extended cable length of the flush valve (SKY015), makes citing the button in the correct position easy and hassle free. The design of the tank also allows for quick and easy maintenance from either the top or the front of the tank.

Cistern Dimensions: (H) 320mm x (W) 350mm x (D) 140mm
Approx Cistern Weight: 2kg



Scan for Video
Install Guide

Technical drawings available
on request or visit
www.vivasanitary.co.uk



- Supplied with dual entry fill valve for easy bottom or side entry installation
- Complete with an easy install mounting bracket enabling a quick and easy installation and removal
- Cistern lid allows front and top access for easy maintenance
- Easy twist and remove dual flush valve
- Water saving adjustable flushing volumes
- Flushpipe, fittings and pan seal all included

SKYLO COMPACT CONCEALED TOILET CISTERN

HEIGHT CLEARANCE
FIXING BRACKET

LONG CABLE
FLUSH VALVE

DUAL ENTRY

OR



DUAL ENTRY
FILL VALVE

WATER SAVING
DELAYED FILL

QUICK RELEASE
FLUSH VALVE

HIGH FLOW
FLUSH PIPE



Skylo Concealed Toilet
Cistern

Product Code:
SKYCC01

Cable Length:
570mm

DUAL ENTRY



Skylo Concealed Toilet
Cistern with Air Gap Fill Valve

Product Code:
SKYCC02

Cable Length:
570mm





WC PAN CONNECTORS

RIGID WC PAN CONNECTORS

Our rigid pan connectors are made from a high quality polypropylene plastic with an excellent rubber sealing washer. The internal rubber gasket also has a unique reseeding feature meaning the seal with the pan spigot is extremely water tight.

All with 90 – 107mm inlet (excluding Extension with 110mm inlet)
All with 90 – 110mm Outlet



Scan for Video
Install Guide

Technical drawings available
on request or visit
www.vivasanitary.co.uk



TOP ACCESS

A 1¼" (32mm) outlet allows a waste pipe to be installed into the pan connector. This is suitable for appliances such as a basin.

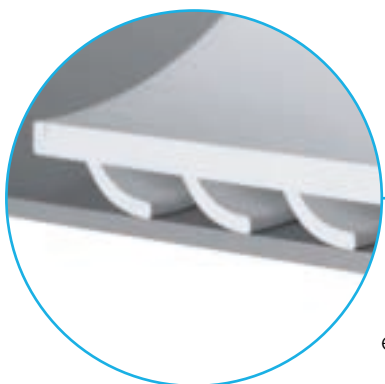
CUT TO SIZE

In certain installations, the original WC pan connector size maybe too large. In these circumstances the wc pan connector can be cut to suit. We recommend using a hacksaw and cut just below the marking ridges.

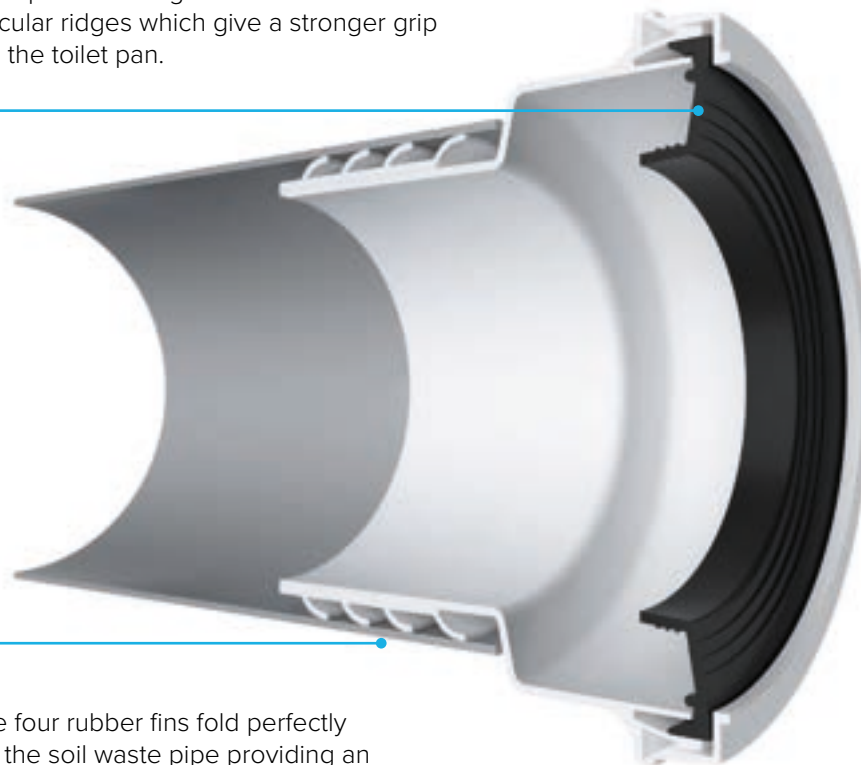
RIGID WC CONNECTORS



The seal has an extended receding rubber which provides a tighter seal. It also has circular ridges which give a stronger grip to the toilet pan.



The four rubber fins fold perfectly into the soil waste pipe providing an excellent seal.



Straight WC Pan Connector

Product Code:
PP0001



14° Angle WC Pan Connector

Product Code:
PP0001/A



20mm Offset WC Pan Connector

Product Code:
PP0003



Scan for Video
Install Guide



40mm Offset WC Pan Connector

Product Code:
PP0003/A



90° Bend WC Pan Connector (32mm Adapter)

Product Code:
PP0005/A



Extension WC Pan Connector

Product Code:
PP0007



Extended Straight WC Pan Connector

Product Code:
PP0001/B



90° Bend Long Tail WC Pan Connector

Product Code:
PP0005/B



90° Bend WC Pan Connector

Product Code:
PP0005



Swan Neck WC Pan Connector

Product Code:
PP0006



WC PAN CONNECTORS

SLINKY-FIT FLEXIBLE WC CONNECTORS

SLINKY-FIT are one of the most flexible pan connector on the market and are wire reinforced giving them strength and stability in the most flexible situations.

All with 90 – 114mm inlet
All with 90 – 110mm Outlet



Scan for Video
Install Guide

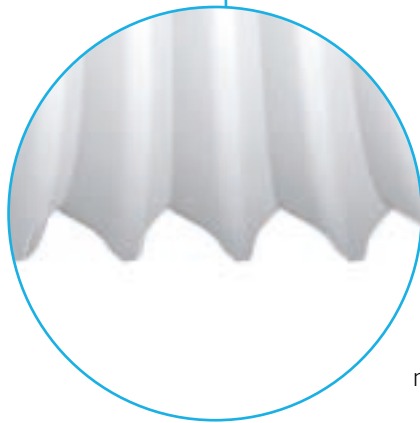
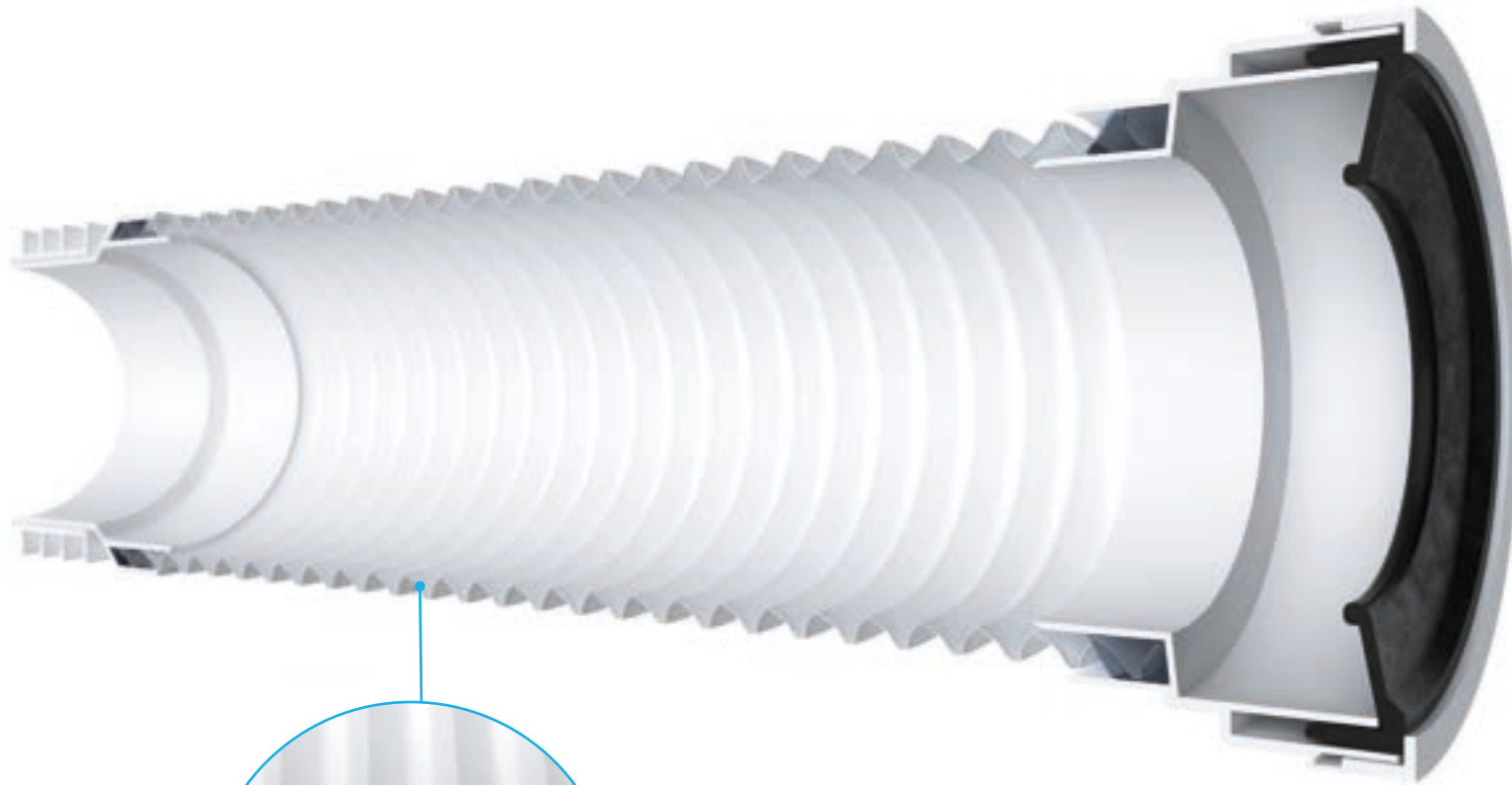
Technical drawings available
on request or visit
www.vivasanitary.co.uk



TOP ACCESS

A 1¼" (32mm) outlet allows a waste pipe to be installed into the pan connector. This is suitable for appliances such as a basin.

SLINKY-FIT FLEXIBLE WC CONNECTORS



All SLINKY-FIT Flexible Pan Connectors have a Smart-Flo design extension tube. The material is specially shaped so anything passing through, hits a smooth point making every ridge point towards the soil pipe.



Scan for Video
Install Guide



Mini Flexible Pan Connector

Product Code:
PP0002/C

Length: 200-350mm



Medium Flexible Pan Connector

Product Code:
PP0002/A

Length: 240-500mm



Long Flexible Pan Connector

Product Code:
PP0002

Length: 300-700mm



90° Flexible Pan Connector

Product Code:
PP0002/B

Length: 300-600mm



90° Flexible Pan Connector with 32mm Adapter

Product Code:
PP0002/D

Length: 300-600mm



TRAPS



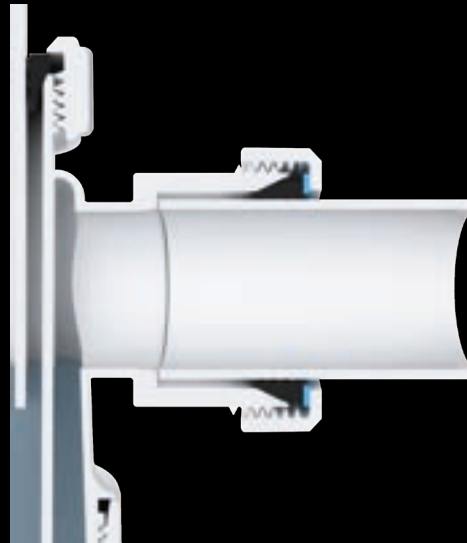
MULTI-PURPOSE WASTE TRAPS

MAGNA Traps offer a multi purpose solution to a number of waste outlets including kitchen sinks, baths, basins bidets, urinals, washing machines and dishwashers. The traps are made from a high quality matt finish polypropylene and come complete with all accessories and washers. The variations in the traps give different options, and allow you to select the correct trap for the correct job.



Scan for Video
Install Guide

Technical drawings available
on request or visit
www.vivasanitary.co.uk



UNIVERSAL OUTLET

All MAGNA waste traps have a universal outlet and suit all waste pipes manufactured to BS EN 1451-1:2000 and BS EN 1329-1:2000. This means any undersized or out of shaped pipe can be inserted and sealed with ease.



135 DEGREE NOZZLE

Certain appliance traps can accept the discharge from washing and/or dishwasher machine(s), in cases where the appliance is not connected at the time of installation the 135 degree nozzle can be replaced with the provided blanking cap at this point the trap will function as normal sink trap providing an easy access point for any future appliance(s).

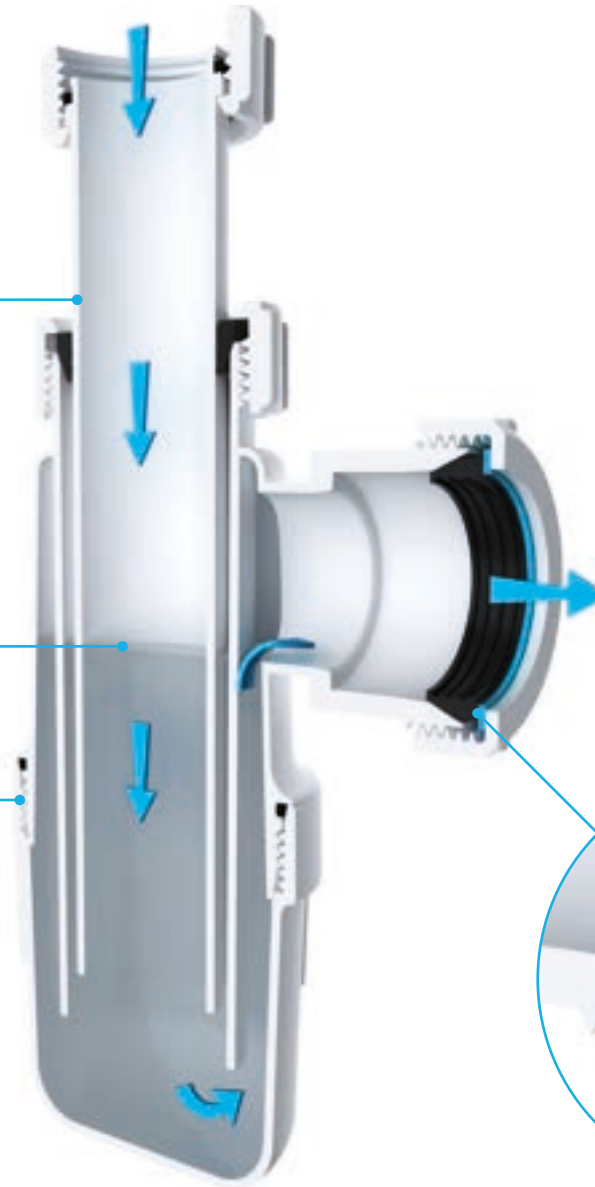


MAGNA MULTI-PURPOSE WASTE TRAPS

The telescopic function allows the outlet's height to be adjusted.

The water seal is the height of water stored in a trap to prevent odours escaping from the drainage.

A bottle trap's bottom can be removed providing an easy clean solution.



Our waste trap rubber seal has circular ridges which give a stronger grip to the waste pipe. The plastic slip ring also prevents the seal from twisting when the nut is tightened.



Scan for Video
Install Guide



1/4" Bottle Trap (38mm Seal)

Product Code:
WTBT3238

Outlet: 1/4"
Seal: 38mm



1/4" Bottle Trap

Product Code:
WTBT3276

Outlet: 1/4"
Seal: 75mm



1/4" Telescopic Bottle Trap

Product Code:
WTBT32T

Outlet: 1/4"
Seal: 75mm



1/2" Bottle Trap (38mm Seal)

Product Code:
WTBT4038

Outlet: 1/2"
Seal: 38mm



1/2" Bottle Trap

Product Code:
WTBT4076

Outlet: 1/2"
Seal: 75mm



1/2" Telescopic Bottle Trap

Product Code:
WTBT40T

Outlet: 1/2"
Seal: 75mm

1/4" Swivel 'P' Trap



Product Code:
WTP3276

Outlet: 1/4"
Seal: 75mm

1/2" Swivel 'S' Trap



Product Code:
WTS4076

Outlet: 1/2"
Seal: 75mm

1/4" Telescopic 'P' Trap



Product Code:
WTTP32

Outlet: 1/4"
Seal: 75mm

1/2" Swivel 'P' Trap



Product Code:
WTP4076

Outlet: 1/2"
Seal: 75mm

1/2" x 19mm Seal Bath Trap



Product Code:
WTB4019

Outlet: 1/2"
Seal: 19mm

1/2" Telescopic 'P' Trap



Product Code:
WTTP40

Outlet: 1/2"
Seal: 75mm

1/4" Swivel 'S' Trap



Product Code:
WTS3276

Outlet: 1/4"
Seal: 75mm

1/2" x 50mm Seal Bath Trap



Product Code:
WTB4050

Outlet: 1/2"
Seal: 50mm

1/4" Straight Through Trap



Product Code:
WTKT32CE

Outlet: 1/4"
Seal: 75mm



1 1/2" Swivel Running Trap

Product Code:
WTRT40

Outlet: 1/2"
Seal: 75mm



1 1/2" Bowl & Half Kit

Product Code:
WTBNH01

Outlet: 1/2"
Seal: 75mm



Washing machine 1 1/2" Standpipe Trap

Product Code:
WTWM01

Outlet: 1/2"
Seal: 75mm



1 1/2" Sink Trap with Single 135° Nozzle

Product Code:
WTST01

Outlet: 1/2"
Seal: 75mm



1 1/2" Shower Trap

Product Code:
WTSH40

Outlet: 1/2"
Seal: 50mm
Tray: 50mm



1 1/2" Sink Trap with Twin 135° Nozzles

Product Code:
WTST02

Outlet: 1/2"
Seal: 75mm



1 1/2" Shower Trap Chrome (plastic) Cover

Product Code:
WTSH90

Outlet: 1/2"
Seal: 50mm
Tray: 90mm



90mm Metal Trap Covers
For use with WTSH90

WTSH90/GC -
Gloss Chrome

WTSH90/MB -
Matt Black

WTSH90/MW -
Matt White

WTSH90/BC -
Brushed Copper

WTSH90/BB -
Brushed Brass

WTSH90/BN -
Brushed Nickel





TRAPS



SELF-SEALING WASTE VALVE

The Magna Valve is a non-return valve with an internal membrane. The valve opens to allow water to be discharged, then automatically closes to prevent foul smells and sewer gases from entering the building. This product is very adaptable, and is suitable for installation under sinks, basins, bidets, baths and urinals.



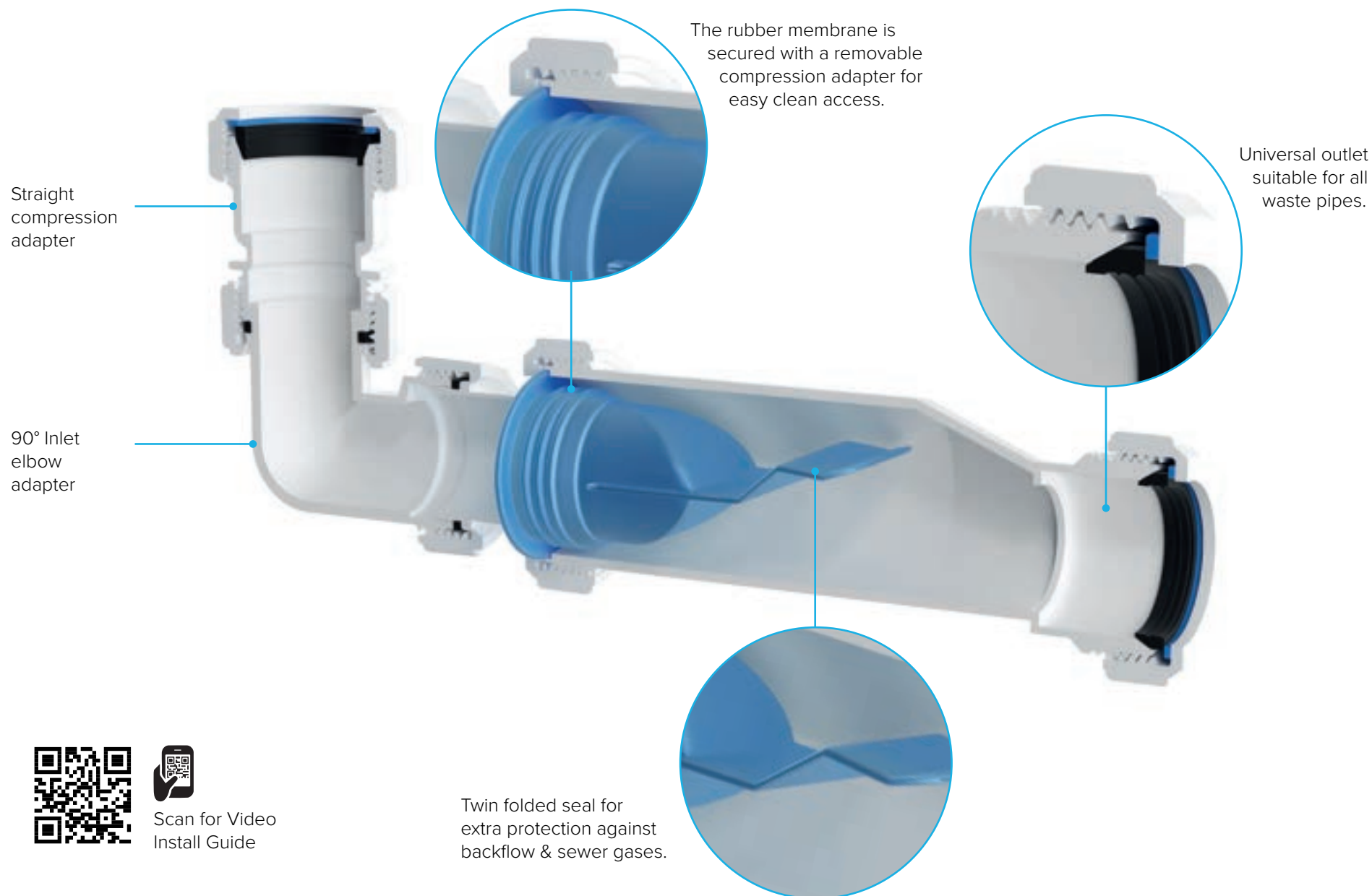
Scan for Video
Install Guide

Technical drawings available
on request or visit
www.vivasanitary.co.uk

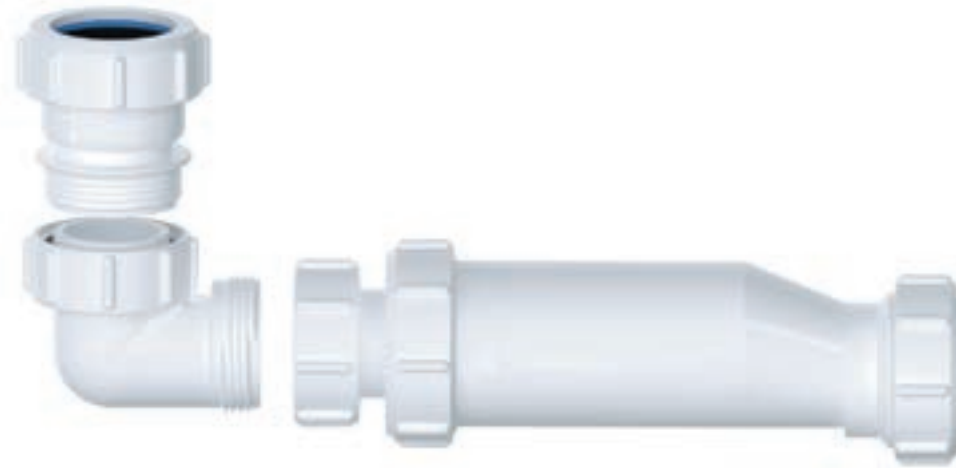


- △ Can be installed in a horizontal or vertical position.
- △ Complete with 90° Inlet and Straight Compression Adapters.
- △ Waterless trap that won't dry out and won't gurgle.
- △ Drain cleaning products should not be poured down the Magna Valve

MAGNA SELF-SEALING WASTE VALVE



Scan for Video
Install Guide

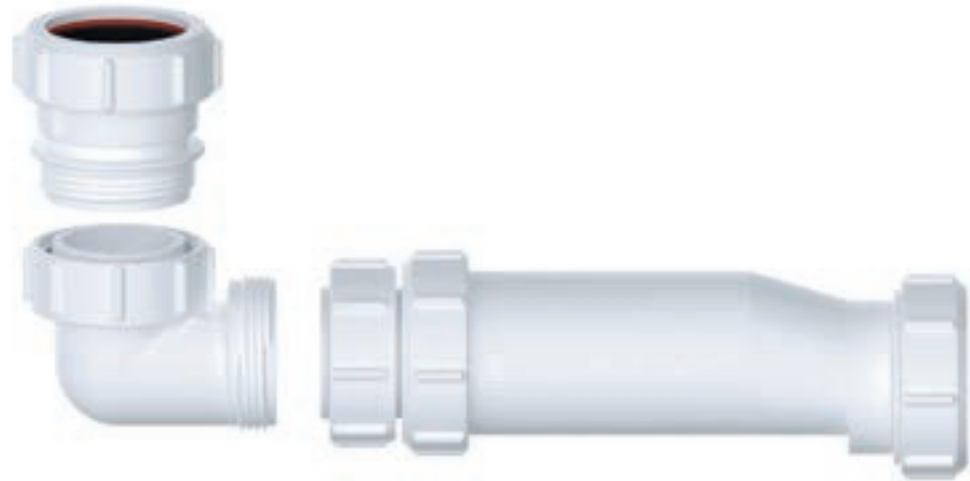


1/4" Magna Self-Sealing Waste Valve

Product Code:
WTSTC32

Outlet: 1/4"

Suitable for:
Basin
Bidet



1/2" Magna Self-Sealing Waste Valve

Product Code:
WTSTC40

Outlet: 1/2"

Suitable for:
Sink
Bath
Urinal
Washing Machine
Dishwasher



WASTES

BASIN WASTES

A luxury range of brass construction basin wastes including slotted and unslotted models and 90mm long tails. Available in Chrome or Black and all supplied with a LEAK FREE washer.

COMBINATION WASTES

A selection of bath wastes made from a high quality polypropylene complete with a flexible overflow. Our bath wastes are not only made to last but will also help create that stylish look in your bathroom.

KITCHEN SINK WASTES

A range of stainless steel kitchen sink wastes which include basket strainers and combination wastes. With the options of both round or square overflows, this high quality selection is sure to have you covered.



Scan for Video
Install Guide

Technical drawings available
on request or visit
www.vivasanitary.co.uk

UNIVERSAL BASIN WASTES



FREE FLOW

Convert a clicker waste into a free flow waste, using the included conversion adapter



UNIVERSAL

Suitable for both slotted and unslotted basins

LEAK FREE

A simple 2 part design giving you a leak free installation without the use of silicone or putty.



Scan for Video
Install Guide

UNIVERSAL BASIN WASTES



Chrome Universal
Clicker Basin Waste

Product Code:
BWUNI/GC



Matt Black Universal
Clicker Basin Waste

Product Code:
BWUNI/MB



Brushed Copper
Universal Clicker Basin
Waste

Product Code:
BWUNI/BC



Brushed Brass
Universal Clicker Basin
Waste

Product Code:
BWUNI/BB



**Matt White Universal
Clicker Basin Waste**

Product Code:
BWUNI/MW



**Poly Plug Universal
Basin Waste**

Product Code:
BWUNI/PP



**Brushed Nickel
Universal Clicker Basin
Waste**

Product Code:
BWUNI/BN



**Chrome Plug
Universal
Basin Waste**

Product Code:
BWUNI/CP

COMBINATION BATH WASTES

Whether it be plastic or brass, all of our bath waste overflows have a polished chrome finish giving your bath the look it deserves.



Choose from a standard poly plug, chrome clicker or a chrome pop-up plug which is operated when the overflow is turned.



Scan for Video
Install Guide



Bath Combination Waste

Product Code:
CWBO1

Features:
Poly Plug
Chrome Overflow



Clicker Easy Clean Bath Combination Waste

Product Code:
CWB02

Features:
Brass Chromed Plug
Brass Chromed Overflow
Easy Clean



Pop-up Bath Combination Waste

Product Code:
CWB03

Features:
Turn Action Pop-up
Brass Chromed Plug
Brass Chromed Overflow



Clicker Easy Clean Black Bath Combination Waste

Product Code:
CWB02/B

Features:
Brass Black Plug
Brass Black Overflow
Easy Clean

BLACK EDITION



Pop-up Black Bath Combination Waste

Product Code:
CWB03/B

Features:
Turn Action Pop-up
Brass Black Plug
Brass Black Overflow

BLACK EDITION

KITCHEN SINK WASTES



Our square overflow sits behind the sink's square opening and is secured into place using a small bolt. This means only the sink opening is visible leaving the overflow completely hidden behind the sink.

Our basket wastes complete with a removable strainer plug are ideal for the modern kitchen sink, made from ABS plastic and a high quality stainless steel they are a perfect fit for any sink.



Scan for Video
Install Guide



Basket Strainer

Product Code:
PP0011



Basket Strainer (Round Overflow)

Product Code:
PP0010



Basket Strainer (Square Overflow)

Product Code:
PP0010/S



Sink Combination Waste

Product Code:
CWS01



Sink Combination Waste (Square Overflow)

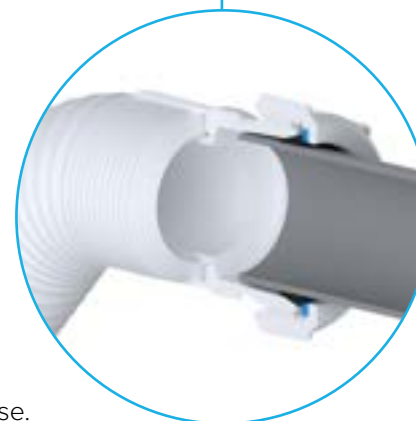
Product Code:
CWS02

MAGNA WASTE FITTINGS

The plain spigot can be connected to any compression fitting.



A universal compression fitting to suit all waste pipes manufactured to BS EN 1451-1:2000 and BS EN 1329-1:2000. This means any undersized or out of shaped pipe can be inserted and sealed with ease.



Scan for Video
Install Guide



**1/4" Flexible Connector
- Compression x Plain
Spigot**

Product Code:
WFLEX01



**1/2" Flexible Connector
- Compression x Plain
Spigot**

Product Code:
WFLEX02



**1/4" Flexible Fitting -
Compression x Plain
Spigot**

Product Code:
WFLEX03



**1/2" Flexible Fitting -
Compression x Plain
Spigot**

Product Code:
WFLEX04



**1/4" Flexible Fitting
- Compression x
Compression**

Product Code:
WFLEX05



**1/2" Flexible Fitting
- Compression x
Compression**

Product Code:
WFLEX06



FLEXIBLE HOSES

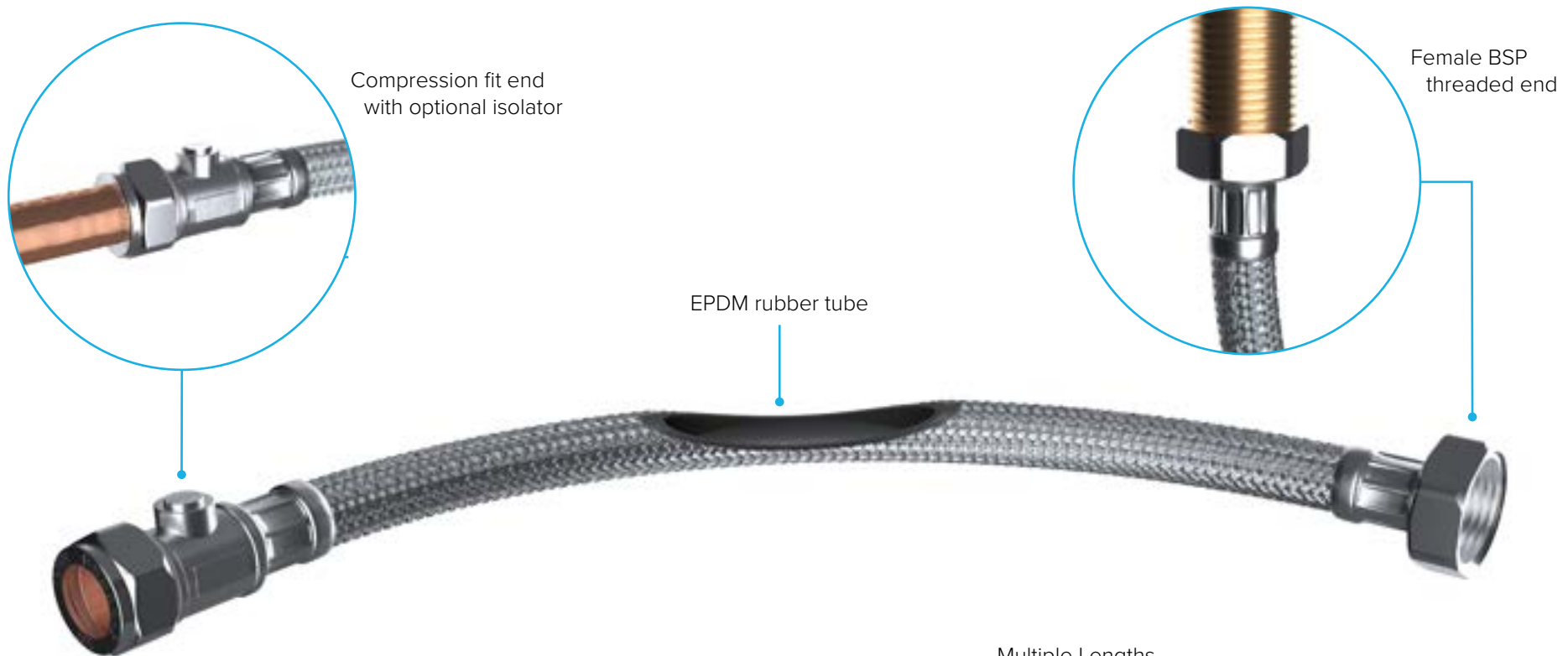
All our flexible hoses are made from 304 stainless steel over braided EPDM rubber hose and have a working pressure of -5°C to 90°C. Each hose has a 10 bar working pressure and a bore up to 13mm.



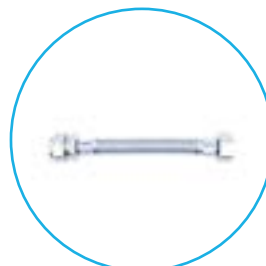
Scan for Video
Install Guide

Technical drawings available
on request or visit
www.vivasanitary.co.uk

STAINLESS STEEL FLEXIBLE HOSES



Multiple Lengths



150mm



300mm



500mm



900mm



1/2" x 15mm

Product Code:

SSH1/B - 150mm Long
SSH1 - 300mm Long
SSH1/A - 500mm Long
SSH1/C - 900mm Long
SSH1/D - 1/2" Nylon 300mm



1/2" x 15mm Isolator

Product Code:

SSH2/B - 150mm Long
SSH2 - 300mm Long
SSH2/A - 500mm Long
SSH2/C - 900mm Long
SSH2/D - 1/2" Nylon 300mm



15mm x 15mm

Product Code:

SSH3 - 300mm Long
SSH3/A - 500mm Long
SSH3/C - 900mm Long



3/4" x 15mm

Product Code:

SSH4 - 300mm Long
SSH4/A - 500mm Long
SSH4/C - 900mm Long



3/4" x 22mm

Product Code:

SSH5 - 300mm Long
SSH5/A - 500mm Long
SSH5/C - 900mm Long



3/4" x 22mm Isolator

Product Code:

SSH6 - 300mm Long
SSH6/A - 500mm Long
SSH6/C - 900mm Long



Monobloc Pair - 300mm Long

Product Code:

SSH7 - M10 x 15mm
SSH7/A - M10 x 1/2"



Monobloc Pair - 300mm Long

Product Code:

SSH8 - M12 x 15mm
SSH8/A - M12 x 1/2"



3/4" x 15mm Isolator

Product Code:

SSH9 - 300mm Long
SSH9/A - 500mm Long
SSH9/C - 900mm Long



1/2" x 1/2"

Product Code:

SSH13 - 300mm Long
SSH13/A - 500mm Long



3/8" x 15mm

Product Code:

SSH15 - 300mm Long



SPARES AND ACCESSORIES

TOILET ACCESSORIES

A comprehensive selection of toilet accessories, these products are mainly used alongside our core range of cistern fittings. For example, if you are fitting a Skylo height adjustable syphon, you will more than likely require a toilet handle. You should be able to find the toilet accessories to suit your needs in this section.



Scan for Video
Install Guide

Technical drawings available
on request or visit
www.vivasanitary.co.uk

TOILET ACCESSORIES



E Type Toilet Handle Kit

Product Code:
PP0008E (1/2")
PP0008E/A (3/8")



1 1/2" Close Couple Kit

Product Code:
PP0030



Cistern Accessory Kit

Product Code:
SKY096



D Type Toilet Handle Kit

Product Code:
PP0008D (1/2")
PP0008D/A (3/8")



1 1/2" Close Couple Kit (Flat Plate)

Product Code:
PP0030/A



Bolt Through Kit

Product Code:
PP0021



Cistern Lever Arm

Product Code:
PP0008/LA



2" Close Couple Kit (Flat Plate)

Product Code:
PP0030/B



Straight Basin Fixing Kit

Product Code:
PP0025 (M8)
PP0025/A (M10)



Straight Toilet Pan Fixing Kit

Product Code:
PP0028/A
(Chrome Cap)
PP0028/AW
(White Cap)



Chrome UNI-BUTTON (For Skylo Flush Valves)

Product Code:
UNI/SB



Brushed Copper UNI-BUTTON (For Skylo Flush Valves)

Product Code:
UNI/SBBC



Angled Toilet Pan Fixing Kit

Product Code:
PP0028
(Chrome Cap)
PP0028/W
(White Cap)



Matt Black UNI-BUTTON (For Skylo Flush Valves)

Product Code:
UNI/SBB



Brushed Brass UNI-BUTTON (For Skylo Flush Valves)

Product Code:
UNI/SBBB



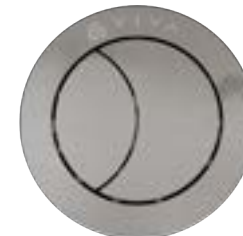
Syphon C Link Kit (2", 3", 4")

Product Code:
AS01/CL



Gloss White UNI-BUTTON (For Skylo Flush Valves)

Product Code:
UNI/SBW



Brushed Nickel UNI-BUTTON (For Skylo Flush Valves)

Product Code:
UNI/SBBN



SPARES AND ACCESSORIES

W A S H E R S & S P A R E S

A wide range of everyday washers that are used to seal various parts of the WC cistern, from flush cones to doughnut washers. This section is also a home to our spares and repairs seal selection, so whether your flush valve is leaking and needs a new washer, or your float valve is making a funny noise, you are bound to find what you require here.



Scan for Video
Install Guide

Technical drawings available
on request or visit
www.vivasanitary.co.uk

WASHERS AND SPARES



Internal Flush Cone
(Black)

Product Code:
PP0004



1 1/2" Dome Washer

Product Code:
PP0026



Internal Flush Cone
(Clear)

Product Code:
PP0004/A



1 1/2" Foam Doughnut
Washer

Product Code:
PP0034



External Flush Cone
(White Rubber)

Product Code:
PP0004/B



2" Foam Doughnut
Washer

Product Code:
PP0035



Studio Doughnut Washer

Product Code:
PP0022



Skylo UNIFILL Diaphragm Washer

Product Code:
UNI/SD

Suitable For:
**UNI/B, UNI/P,
PP0012, PP0012/A,
PP0012/B**



Syphon Diaphragm Washer

Product Code:
AS01/D

Suitable For:
AS01, AS01/3P



Skylo Bottom Entry Diaphragm Washer

Product Code:
PP00/D

Suitable For:
**PP0020, PP0020/A,
PP0020/B**



Skylo Spare Washer Pack

Product Code:
SKY100



Skylo Flush Valve Seal

Product Code:
SKY095

Suitable For:
**SKY005, SKY015,
SKY020, SKY030**



SKYLO COMPACT CONCEALED CISTERN

Bottom or side
entry inlet with
button operated
dual flush
complete
with
fittings



SKYLO COMPACT CONCEALED CISTERN

Bottom or side
entry inlet with
button operated
dual flush
complete
with
fittings



SKYLO COMPACT CONCEALED CISTERN

Bottom or side
entry inlet with
button operated
dual flush
complete
with
fittings



SKYLO COMPACT CONCEALED CISTERN

Bottom or side
entry inlet with
button operated
dual flush
complete
with
fittings



MERCHANDISING

Increase your sales with our fully customisable product display stands. We will supply you hooks, shelves or both to give you the opportunity to display our full range to your customers. No need to have loose spares in a box in the warehouse when you could have them readily available on the shop floor.



10 YEARS WARRANTY

1. 10 Year Warranty

Subject always to the conditions in this guarantee, Viva Sanitary warrants to its customers that the toilet cistern fittings provided by us (including Float Valves, Flush Vales and Toilet Cisterns) shall be free from defects in material and workmanship for a period of ten years from the date of the original purchase.

2. Repair or Replacement under this Warranty

Subject to section 3 below, we shall, at our option, at no cost to the customer, repair, replace or refund the product (in whole or in part as applicable) so long as:

- The customer gives notice in writing to Viva Sanitary within a reasonable time of discovery that a product covered by the warranty is defective;
- Viva Sanitary is given a reasonable opportunity of examining the product in question; and
- the customer (if asked to do so by us) returns such product to Viva Sanitary at the customer's cost.

In our sole discretion, Viva Sanitary may elect to replace a product with a product of the same or better specification.

The terms of this warranty shall apply to any repaired or replacement products supplied by us for the remainder of the warranty period.

3. Limits to this Warranty

Viva Sanitary shall not be liable for a defect in a product where:

- the customer makes any further use of the product after giving the notice required above;
- the defect arises because the customer or a third party failed to follow Viva Sanitary's oral or written instructions as to the storage, commissioning, installation, use and maintenance of the product or adherence to good trade practice regarding the same;
- the customer or a third party (whether or not authorised by the Customer) undertakes or attempts to undertake any disassembly, alteration or repair to such product without our prior written consent;
- the defect arises as a result of fair wear and tear, wilful damage, negligence, or abnormal storage or working conditions;

- the defect arises due to an act of God (such as, but not limited to, a flood or fire); or

- the defect arises as a result of use of in cistern toilet bowl cleaners containing bleach or chlorine.

Viva Sanitary shall under no circumstances whatsoever be liable to the customer under this 10 Year Warranty for any loss of income, loss of profit or any indirect or consequential loss howsoever arising (including costs of dismantling, installation or water damage).

Unless the customer is a consumer, in accepting the 10 Year Warranty, the customer agrees that the implied terms relating to quality and fitness for purpose implied by law are, to the fullest extent permitted by law, excluded from the contract between Viva Sanitary and the customer.

This 10 Year Warranty shall be governed by and construed in accordance with English Law and subject to the exclusive jurisdiction of the English Courts.

