

90mm NRV Shower Trap with 40mm Outlet & 1 ½" Pipe Adaptor.

McALPINE
Plumbing Products

MODELS:
ST90CB10-NRV
ST90CP10-NRV

■ The trap assembly provides a flow rate of 26 litres per minute in accordance with EN274-2: 2002. The flow rate can be severely affected if a proper fall along the pipework is not maintained.

■ (1) Install the trap in the shower tray by mounting parts B, C, D and E in the order illustrated. Using the clamp flange, B, secure the trap body, D, to the shower tray. Ensuring that the gaskets, C and, D, are orientated correctly.

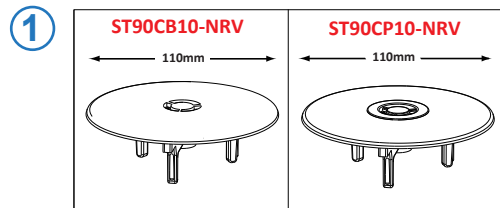
■ Connect the trap body, E, to the 40mm pipe work. Ensure coupling nut and seal are correctly orientated. Tighten nut, G, and check installation for leaks.

■ An 1 ½" solvent weld pipe adaptor, H is also supplied if required.

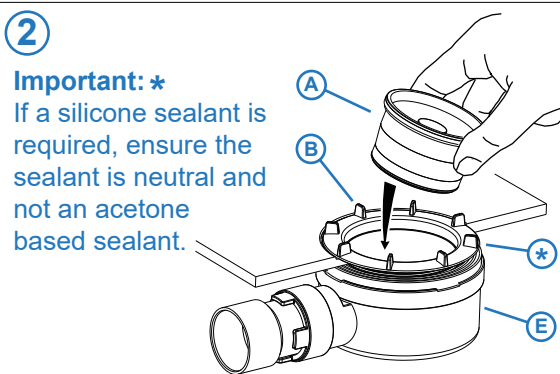
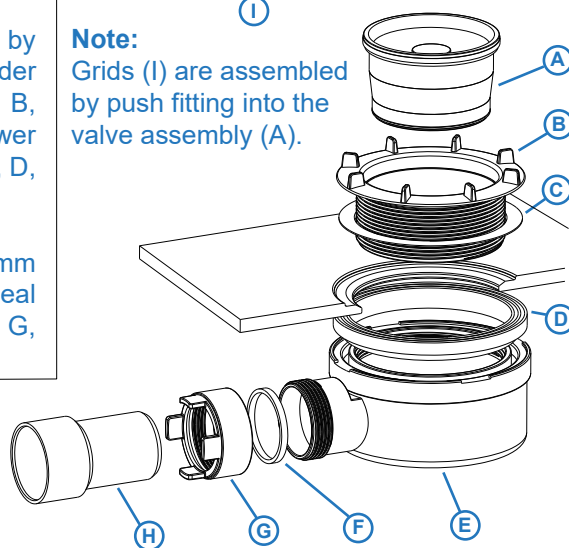
■ (2) Press the valve, A into the clamp flange, B. Then push fully home.

■ Assemble grid cover, I, by inserting the 3 forks into the valve bore. Once located, push the cover fully home.

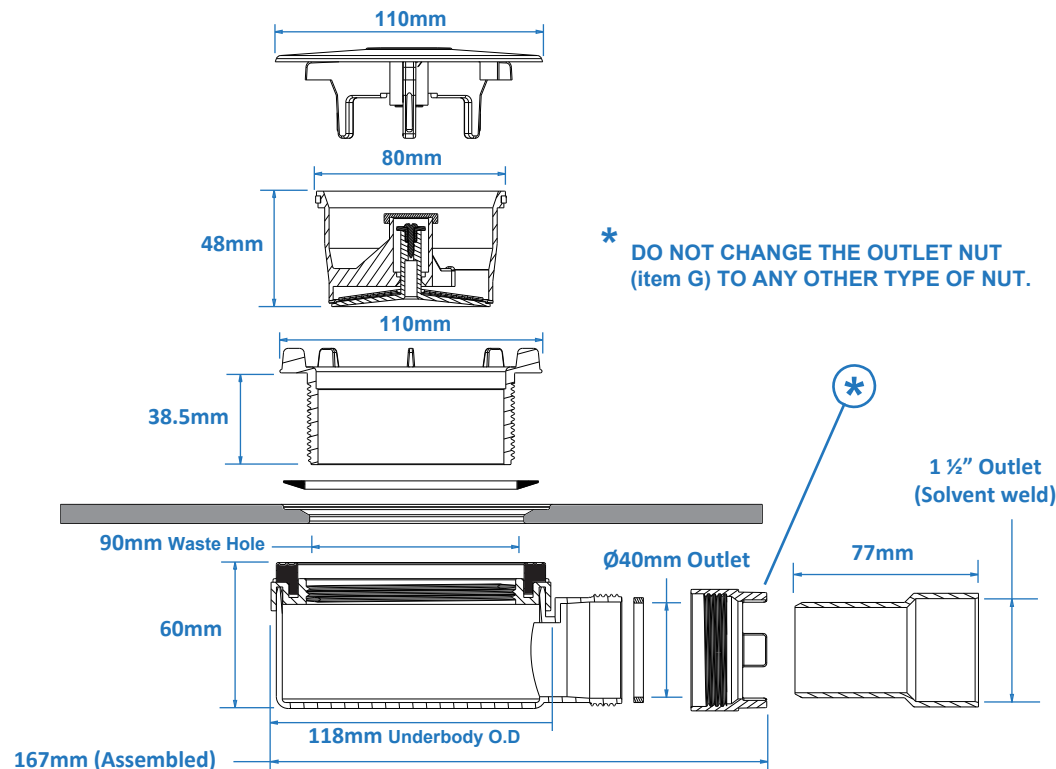
Important:
Note the order and position of the sealing washers. Failure to do so can result in water leakage.



Note:
Grids (I) are assembled by push fitting into the valve assembly (A).

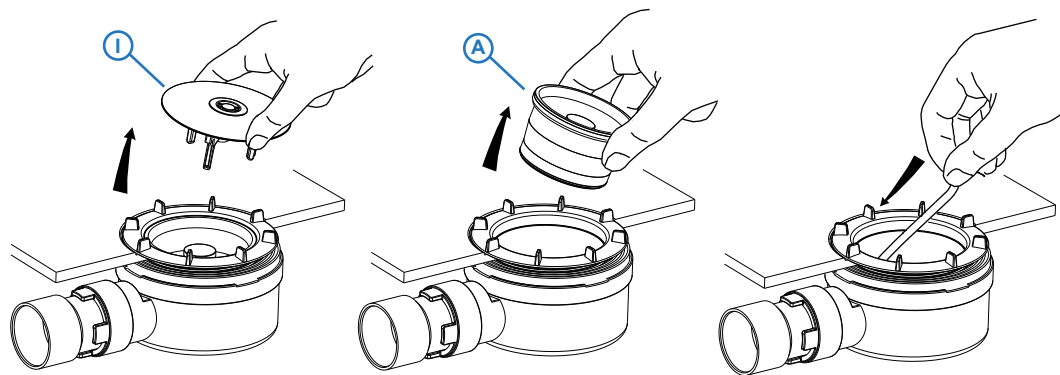


Important: *
If a silicone sealant is required, ensure the sealant is neutral and not an acetone based sealant.



Maintenance:

Regular maintenance is essential to maintain optimal flow. Remove the cover and valve assembly (I&A), and thoroughly clean all parts. Rod outlet if required and rinse the body of the trap with clean water then carefully reassemble the parts.



McAlpine & Co Ltd Kelvin Avenue Hillington Glasgow G52 4LF
Tel: 0141 882 3213 Fax: 0141 891 5065 Fax (Sales Office) 0141 883 5697

www.mcalpineplumbing.com

(en) L-ST90CP10CX-NRV: L-ST90CP10CB-NRV
L-ST90CP10CP-NRV

WC 17/03/20

26 Litres per minute
tested under a constant
15mm head of water